

Monitoring mitochondrial calcium in cardiomyocytes during coverslip hypoxia using a fluorescent lifetime indicator.

Yusuf Mastoor^{1,4}, Mikako Harata^{1,4}, Kavisha Silva¹, Chengyu Liu², Christian A. Combs³, Barbara Roman^{1*}, Elizabeth Murphy^{1*}

¹Laboratory of Cardiac Physiology, Cardiovascular Branch, National Heart, Lung, and Blood Institute, NIH, Bethesda, MD 20892

²Transgenic Core, National Heart, Lung, and Blood Institute, NIH, Bethesda 20892

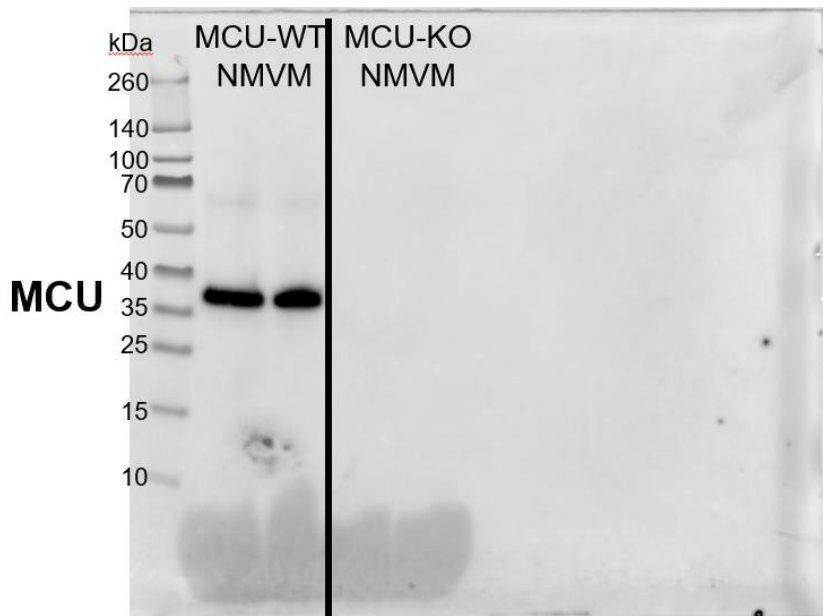
³Light Microscopy Core, National Heart, Lung, and Blood Institute, NIH, Bethesda 20892

⁴These authors contributed equally

*Corresponding Authors: Elizabeth Murphy, Senior Investigator, Laboratory of Cardiac Physiology, National Heart, Lung, and Blood Institute, Building 10, Room 6N248B, 10 Center Drive, Bethesda, MD 20814, murphy1@nhlbi.nih.gov

*Barbara Roman, National Heart, Lung, and Blood Institute, Building 10, Room 6N248, 10 Center Drive, Bethesda, MD 20814, barbara.roman@nih.gov

Supplementary Figures:



Antibody: Sigma, HPA01648

Figure S1. Uncut blot from Figure 1E labeled for MCU.

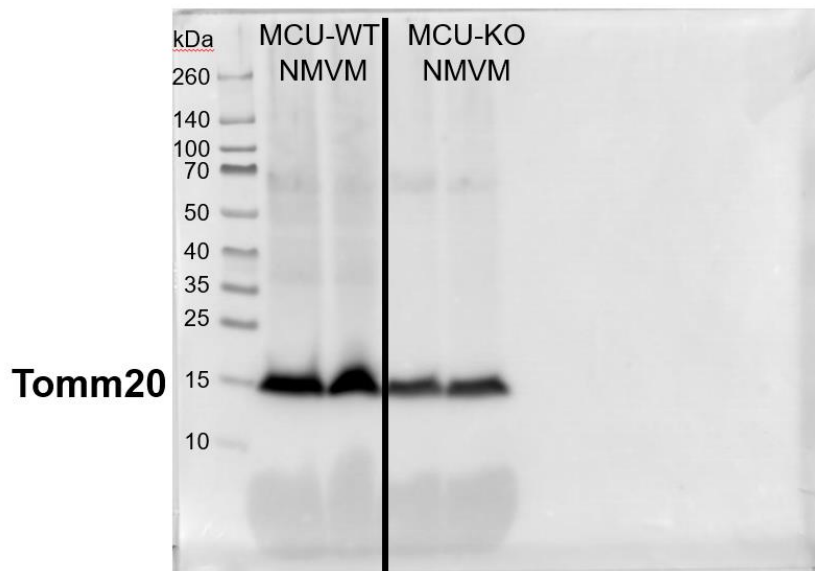
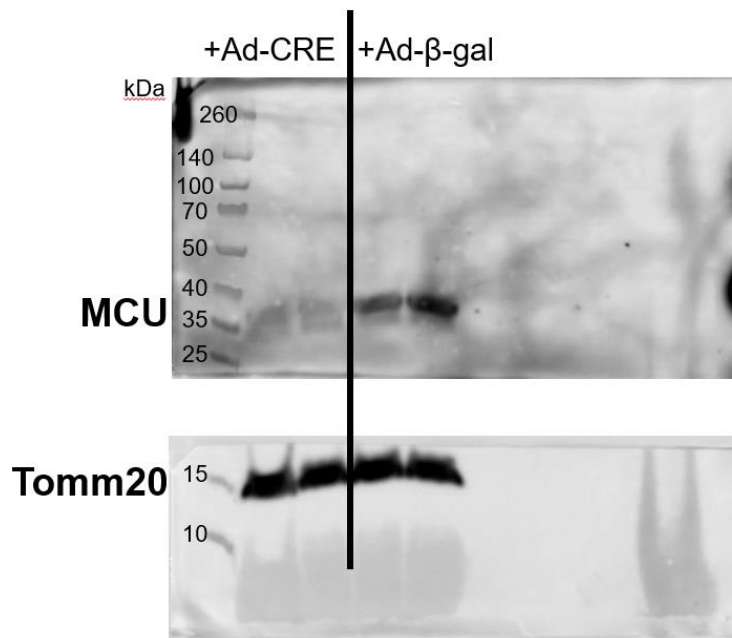


Figure S2. Uncut blot from Figure 1E labeled for Tmm20. Blot from Figure S1 was stripped and re-probed for Tmm20



MCU Antibody: Sigma, AMAB91189

Figure S3. Uncut blot from Figure 5A. Blot was cut and probed for both MCU and Tmm20.

Merged membrane

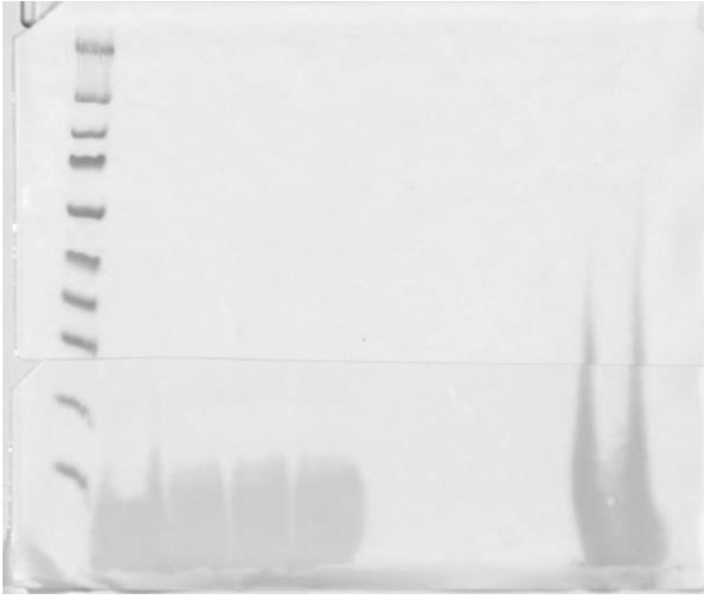


Figure S4. Merged membrane from blot in Figure 5A.